

WYO Theater's 29th Season (2018-2019)

Patrons Served



20840

All Patrons/All Shows

12588

WYO Season Patrons

10%

Students

45%

Adults

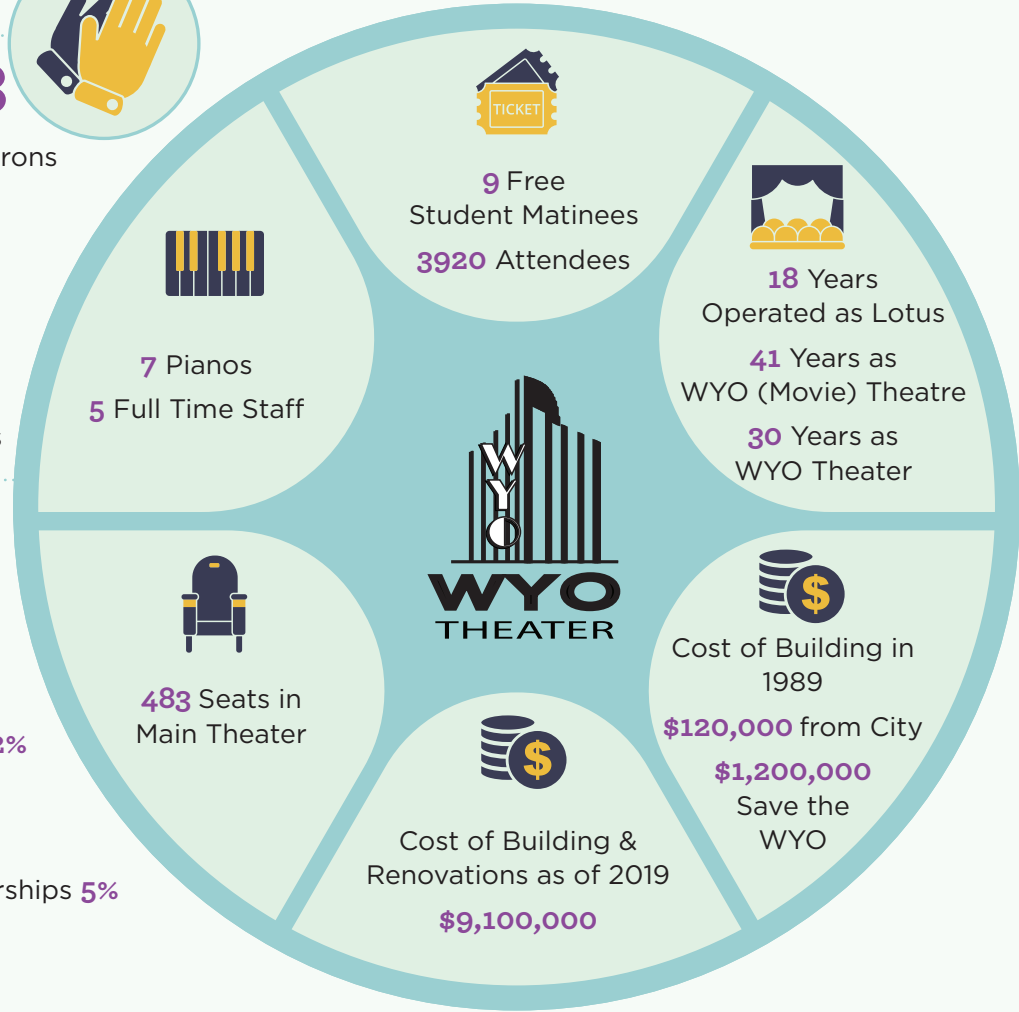
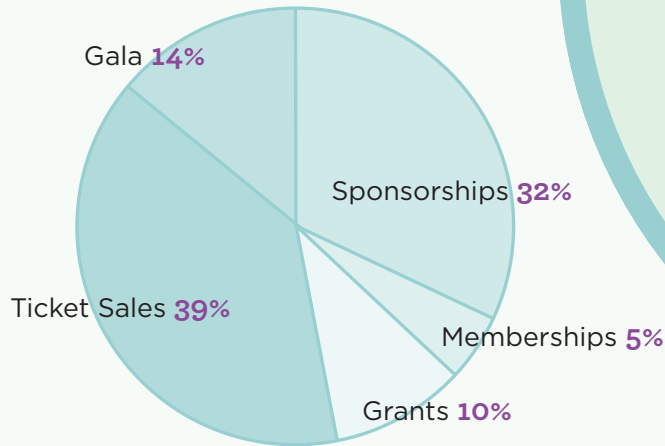
23%

Seniors/ Military

22%

Discounted/Comps

Annual Support



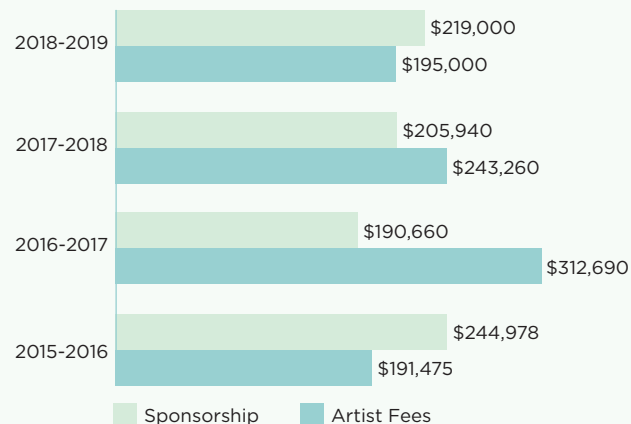
Professional Live Events

844 Since 1989 27 This Season

20 Community Outreach Events

Artist Fees vs Sponsorships & Donations

Cost of Performances Each Season



2,749 Comped or Discounted Tickets to those in Need

29,712 Additional Square Footage since 1989

2,000+ Tandem Alumni in 25 Years

7,000+ Volunteer Hours

322 Days a Year the Space is Used